

Percept 0760BW

LED WASH



Percept equips versatile
interface that's brings lighting
creation to next level.

Range Technology Limited

✉ info@rangetech.com.hk

☎ +852 4614 8284

☎ +852 4614 8284

🏠 Flat /Rm509, 5/F, Yick Tai Industrial Building, 650 – 652 Castle Peak Road, Lai Chi Kok, Kowloon



SPECIFICATIONS

OPTIC

- Light source: 7*60W Osram RGBW LEDs, 50,000 hs
- Color temperature: 2500-8000k adjustable

MOVEMENT

- Extremely accurate positioning
- High-resolution stepper motors ensure extreme accuracy and smooth movements
- Auto-positioning, pan movement: 540° (16 bit), tilt movement: 270° (16 bit)

COLORS

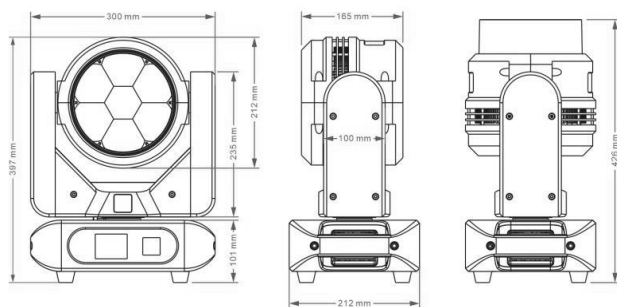
- Linear RGBW , color mixing with unlimited colors, dynamic colour macro effect with variable speed
- Super uniform light beam with no colour shadows

POWER SUPPLY

- Power consumption: 500W@220V
- AC 100~240V, 50/60Hz

WEIGHT AND DIMENSION

- Net weight: 9KG
- Product size: (see below)
- Carton size: 500*410*300MM
- Flight case size(4in1): 790*520*620MM



EFFECT SECTION

- Wash, beam, multiple macros
- 2.5°-60° Electronic Zoom angle
- Digital Wash-Beam effect
- Beam edge softening control (in Wash mode)
- 0-100% linear electronic dimmer without color variation
- Adjustable speed stop/strobe effect with instantaneous blackout
- Dedicated channel for color temperature setting
- RGBW auto-tuning
- Control mode: International standard DMX512, 3-pin/5-pin DMX512
- Standard mode: 21channels, Sound control mode, Stand-alone mode

OTHER FUNCTION

- LED over temperature protection
- Advanced cooling system, intelligent control of wind speed
- Display working temperature
- DMX Software update
- Show software version number
- Display LEDs and lanterns use time
- Gravitation sensor for auto screen positioning
- 100% brightness without stroboscopic problem
- Special flicker free management for HD and UHD cameras, ready for 8K and 16K
- Manual programming function
- Manual fine calibration function
- DMX and RDM data
- IN/OUT : Locking 3-pin / 5-pin XLR

Range Technology Limited

✉ info@rangetech.com.hk

☎ +852 4614 8284

☎ +852 4614 8284

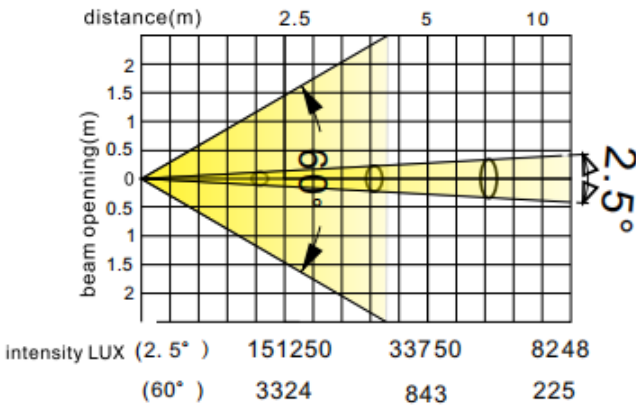
🏠 Flat /Rm509, 5/F, Yick Tai Industrial Building, 650 – 652 Castle Peak Road, Lai Chi Kok, Kowloon



DMX CHANNEL

| Channel NO. | Function | Description | | |
|-------------|-------------------|-------------|--|-----|
| Ch1 | R | 000 | | 255 |
| Ch2 | Red Fine | 000 | | 255 |
| Ch3 | G | 000 | | 255 |
| Ch4 | Green Fine | 000 | | 255 |
| Ch5 | B | 000 | | 255 |
| Ch6 | Blue Fine | 000 | | 255 |
| Ch7 | W | 000 | | 255 |
| Ch8 | White Fine | 000 | | 255 |
| Ch9 | Color Temperature | 000 | | 255 |
| Ch10 | Color Macro | 000 | | 255 |
| Ch11 | Strobe | 000 | | 255 |
| Ch11 | Strobe | 000 | | 255 |
| Ch12 | Dimmer | 000 | | 255 |
| Ch13 | Dimmer Fine | 000 | | 255 |
| Ch14 | Pan | 000 | | 255 |
| Ch15 | Pan Fine | 000 | | 255 |
| Ch16 | Tilt | 000 | | 255 |
| Ch17 | Tilt Fine | 000 | | 255 |
| Ch18 | Dimmer Speed | 000 | | 255 |
| Ch19 | Reset | 000 | | 255 |
| Ch20 | Zoom | 000 | | 255 |
| Ch21 | Reserved | 000 | | 255 |

LUMEN



Range Technology Limited

- info@rangetech.com.hk
- +852 4614 8284
- +852 4614 8284
- Flat /Rm509, 5/F, Yick Tai Industrial Building, 650 – 652 Castle Peak Road, Lai Chi Kok, Kowloon

